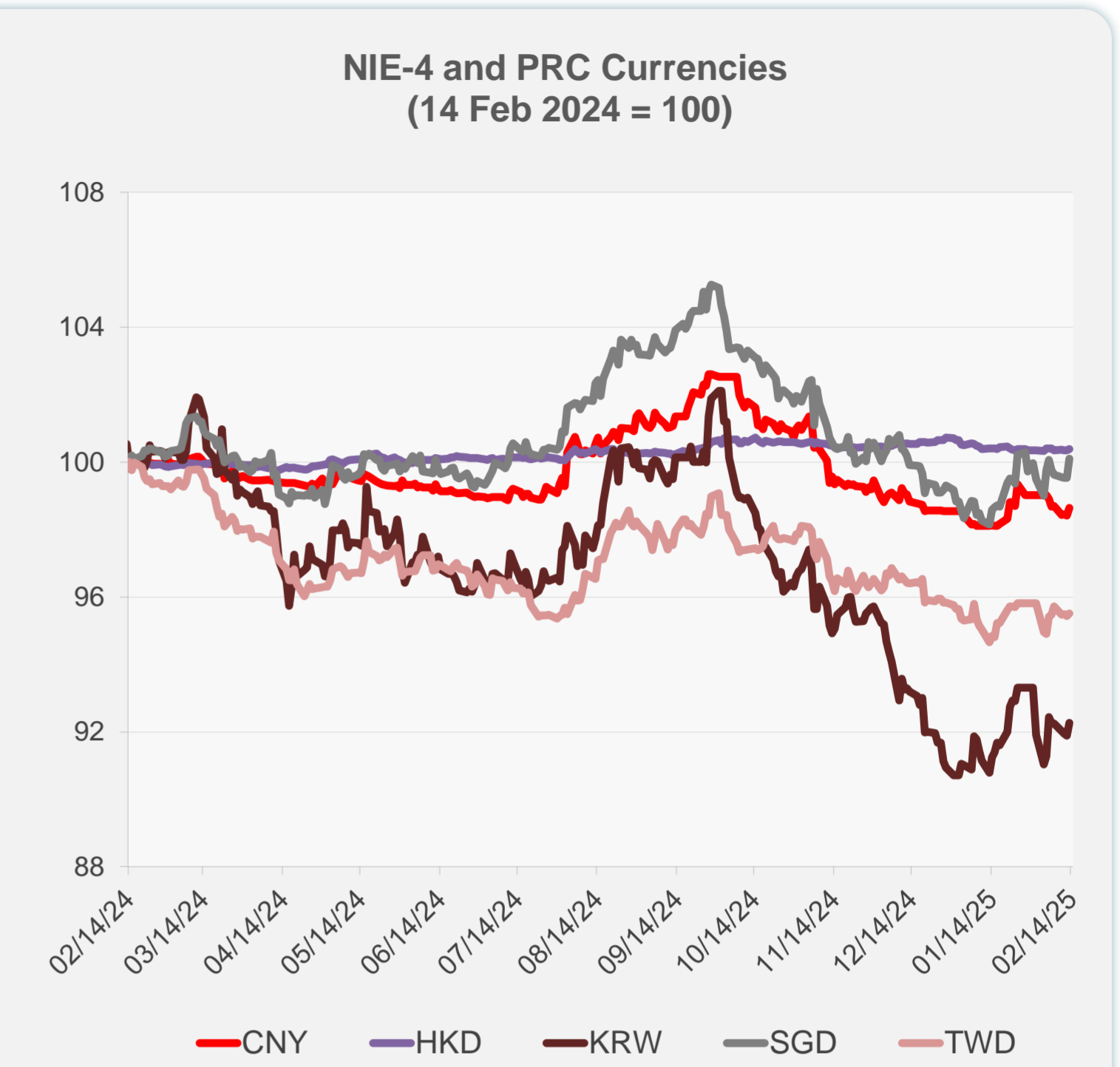
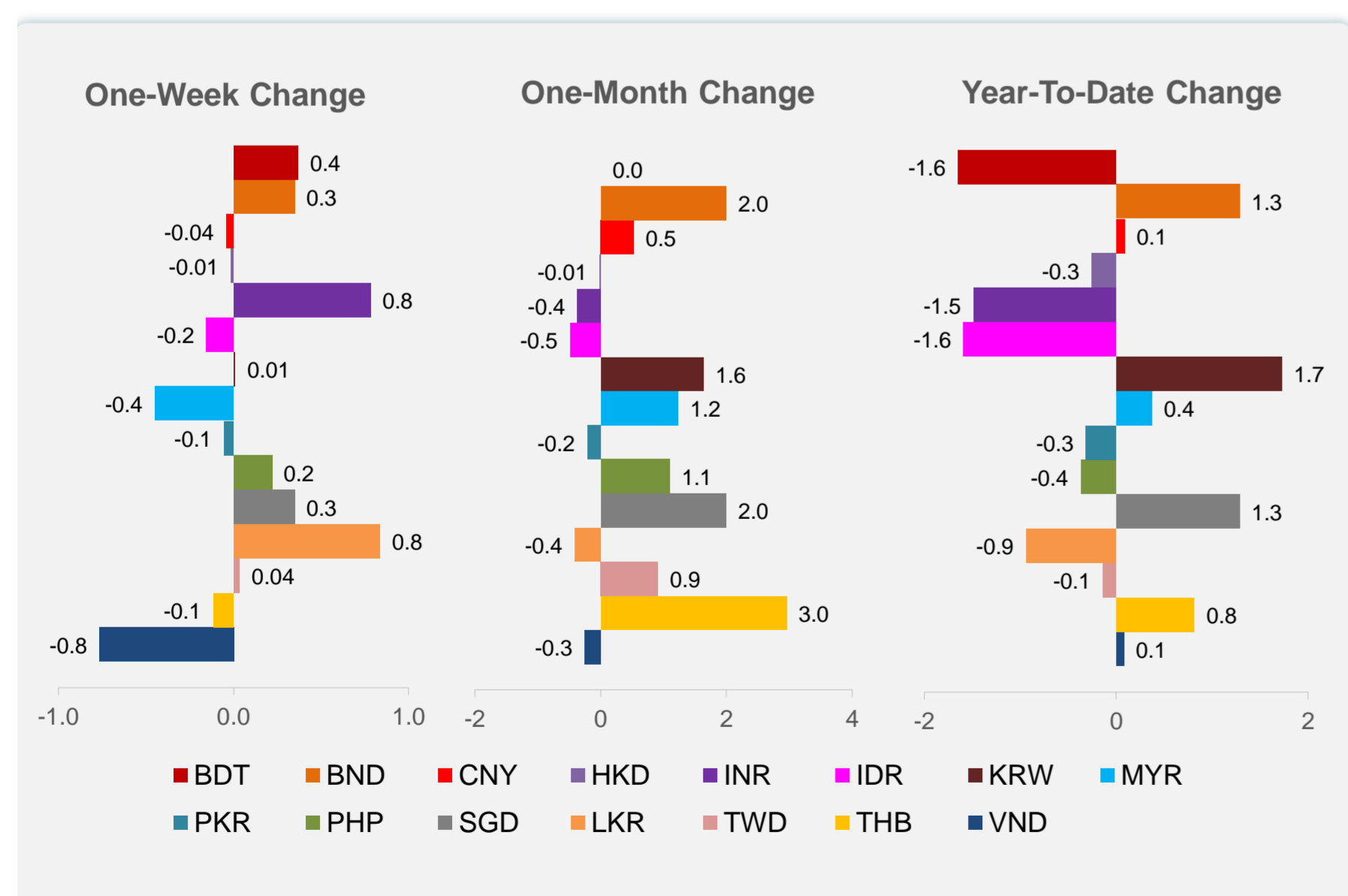
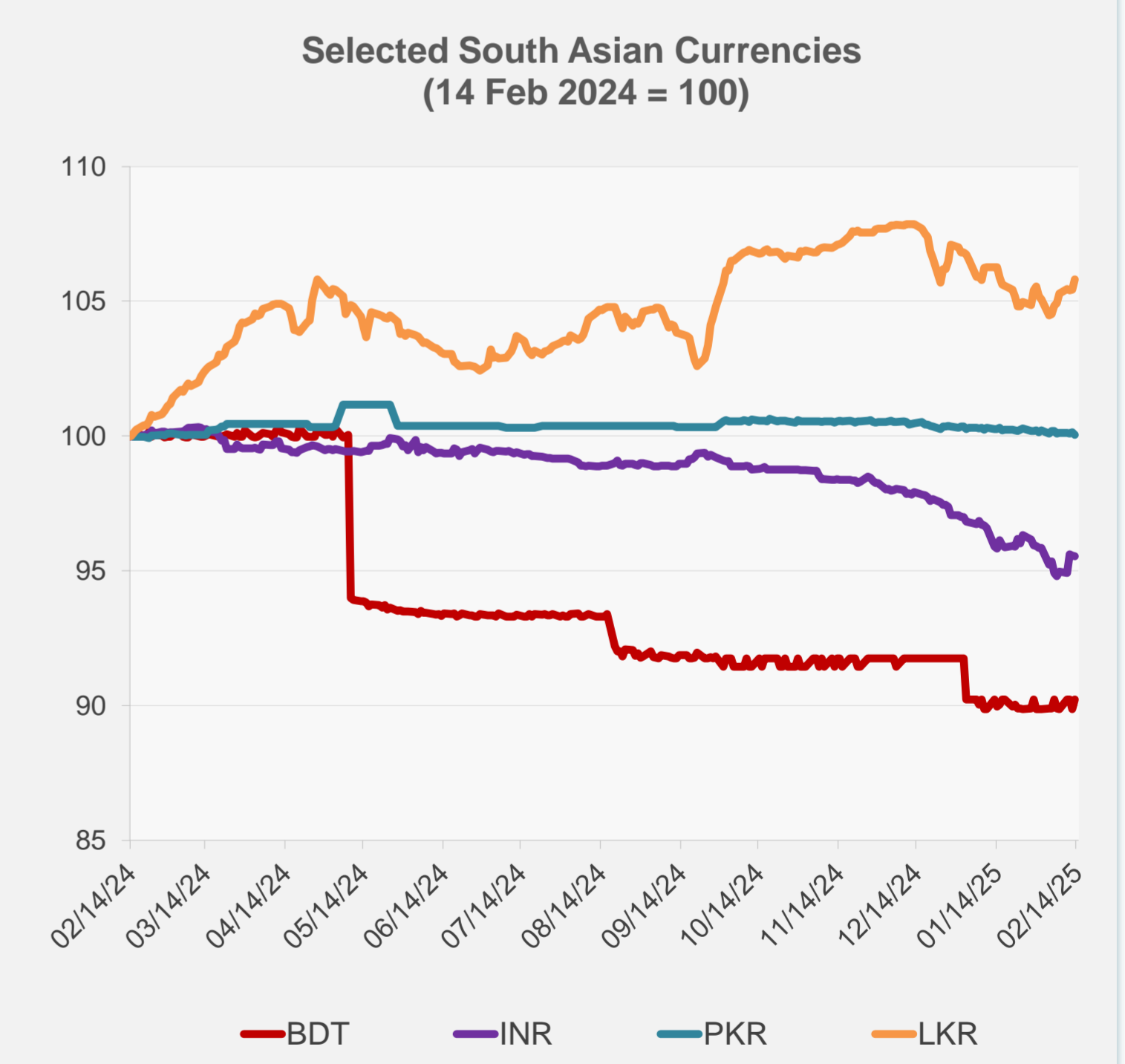
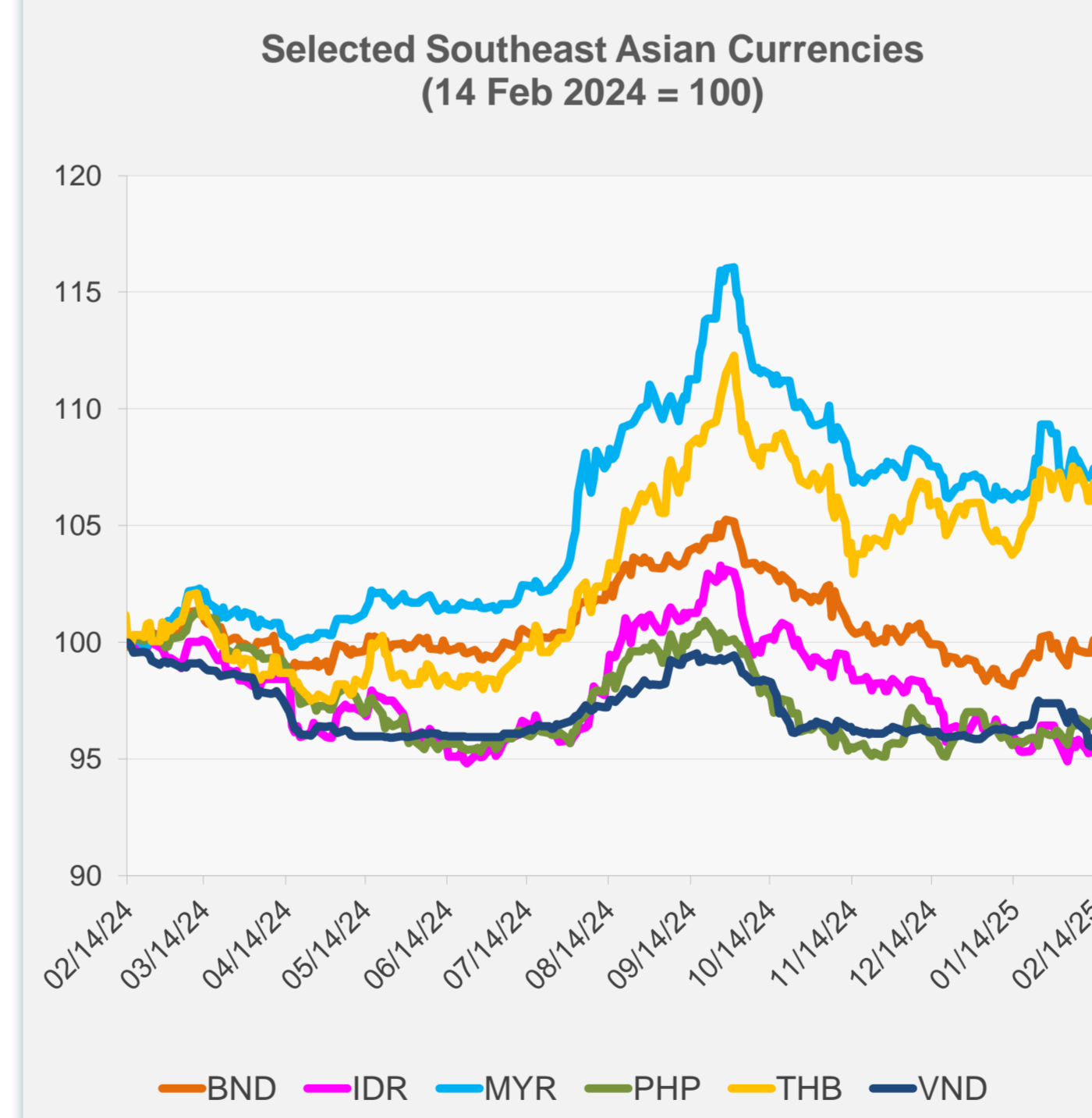


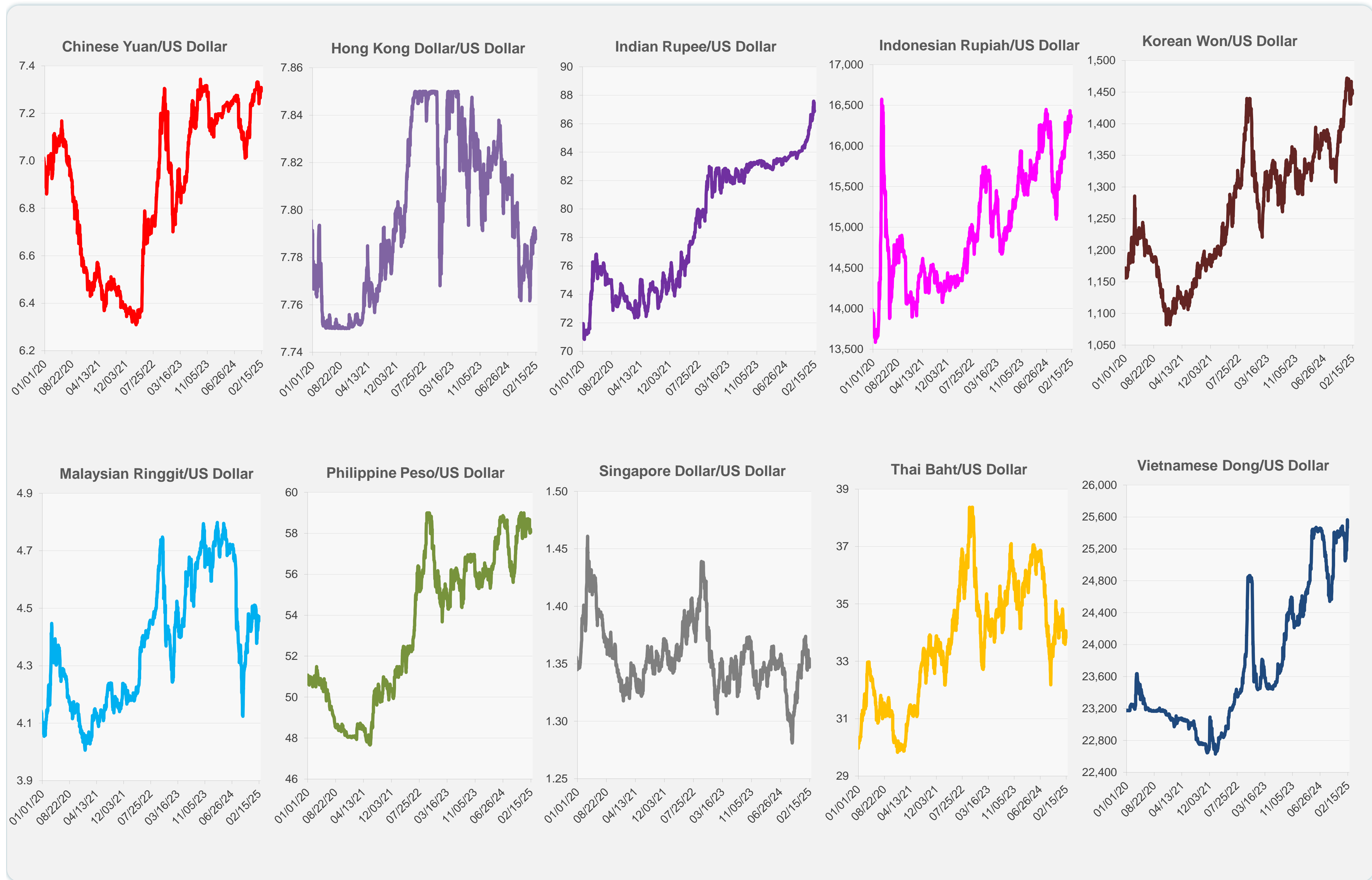
	Latest Closing	% change from Previous Day	% change from 01-Jan-25
Euro	0.96	0.58	0.76
Japanese yen (JPY)	153.14	0.86	2.63
Bangladeshi taka (BDT)	121.50	0.41	-1.65
Brunei dollar (BND)	1.35	0.57	1.28
Chinese yuan (CNY)	7.29	0.22	0.09
Hong Kong dollar (HKD)	7.79	0.04	-0.25
Indian rupee (INR)	86.91	-0.02	-1.49
Indonesian rupiah (IDR)	16,355.00	0.06	-1.59
Korean won (KRW)	1,447.20	0.43	1.72
Malaysian ringgit (MYR)	4.46	0.38	0.37
Pakistan rupee (PKR)	279.25	-0.09	-0.31
Philippine peso (PHP)	58.06	0.22	-0.37
Singapore dollar (SGD)	1.35	0.57	1.28
Sri Lanka rupee (LKR)	295.77	0.36	-0.94
Taipei,China NT dollar (TWD)	32.83	0.08	-0.14
Thai baht (THB)	33.82	0.72	0.81
Vietnamese dong (VND)	25,465.00	0.39	0.08



NIE = Newly Industrialized Economies



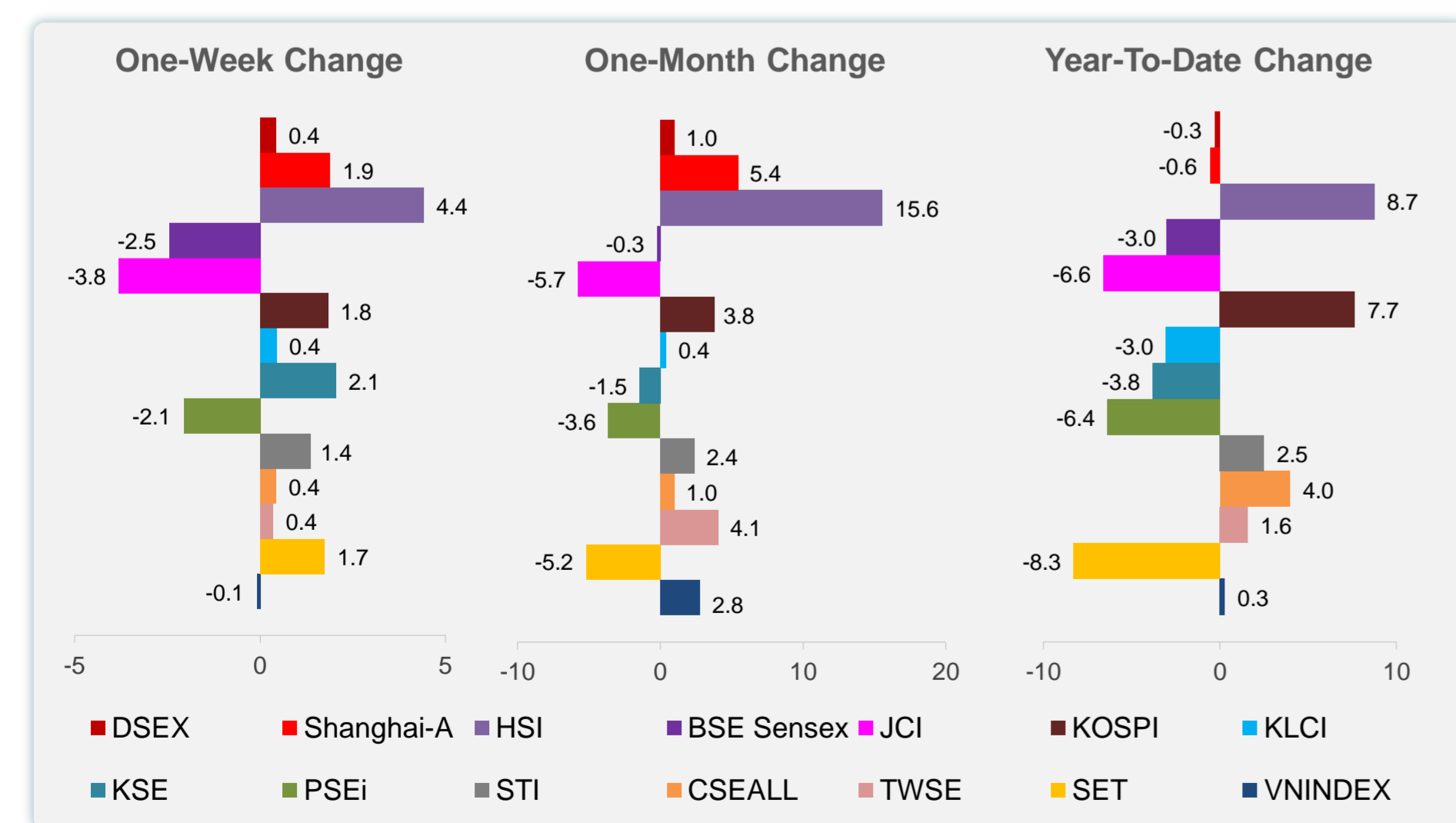
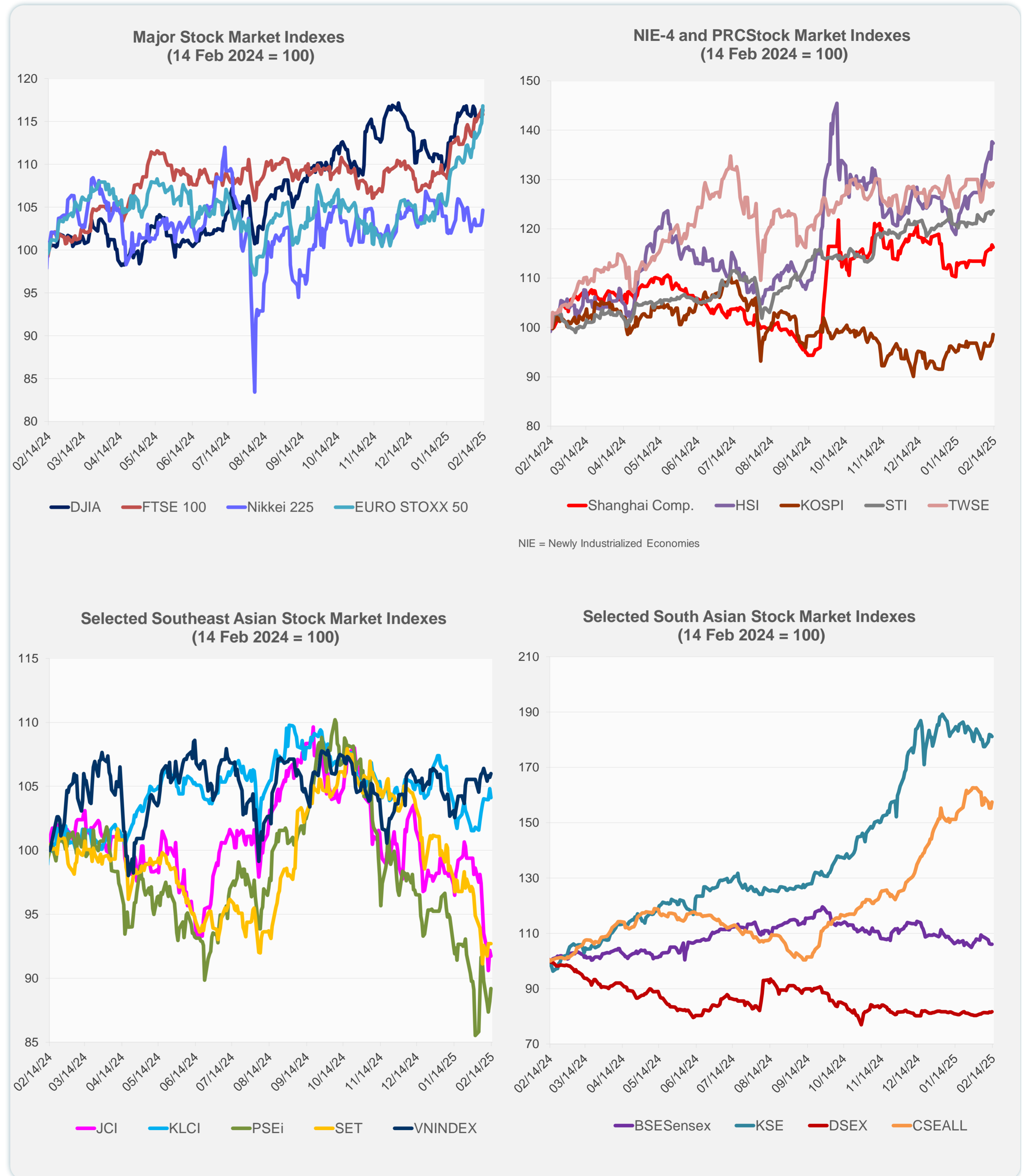
Note: Negative/Decreasing values indicate depreciation of local currency, and positive/increasing values indicate appreciation.
Source: ADB calculations using data from Haver Analytics.



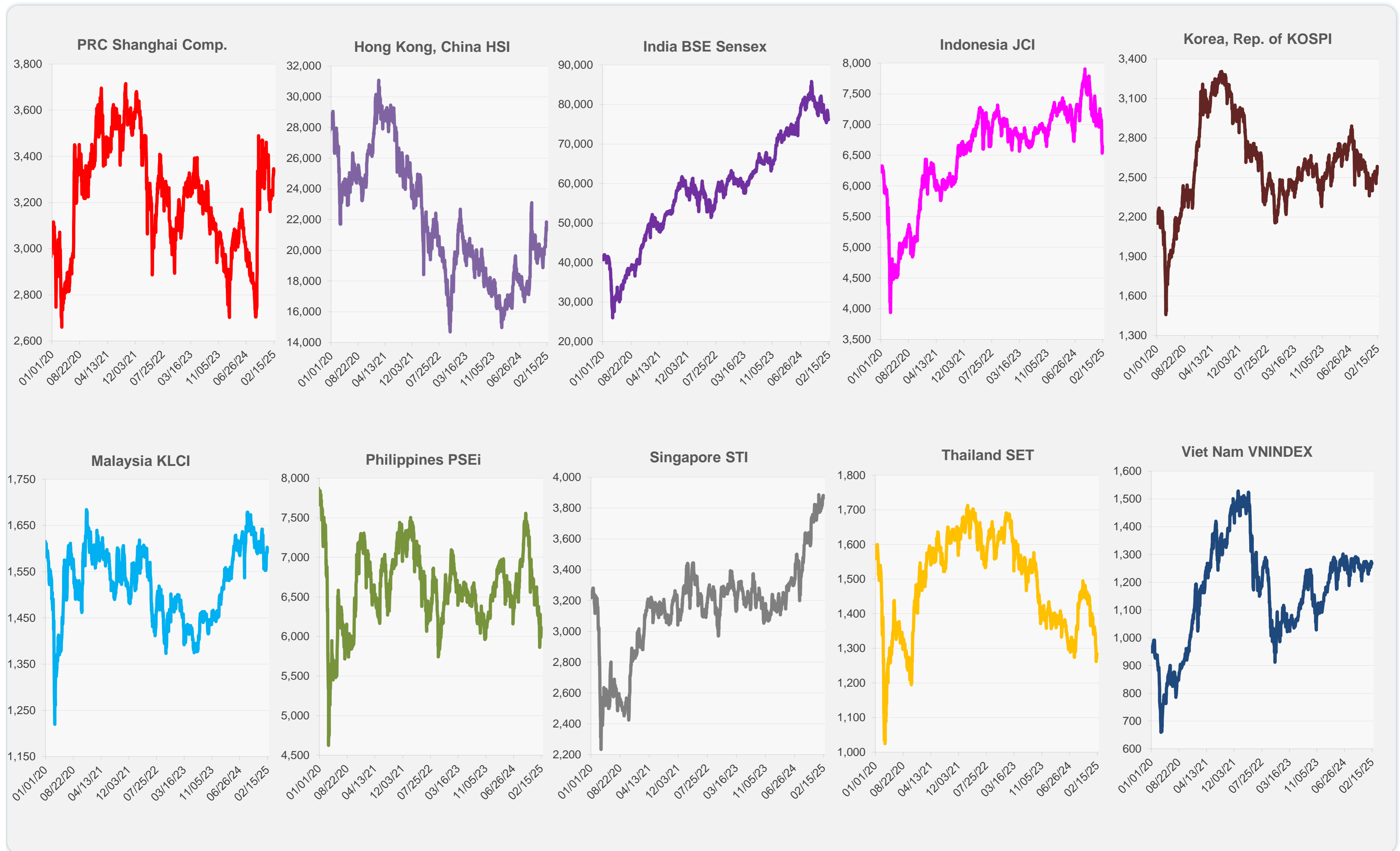
Source: Haver Analytics.

Daily Market Watch
STOCK INDEXES

	Latest Closing	% change from Previous Day	% change from 01-Jan-25
US Dow Jones Ind Avg	44,711.43	0.77	5.09
US NASDAQ	19,945.65	1.50	3.29
US S&P 500	6,115.07	1.04	3.97
UK FTSE 100	8,764.72	-0.49	7.24
EURO STOXX 50	5,500.50	1.75	12.35
Japan NIKKEI 225	39,461.47	1.28	-1.09
Bangladesh DSEX	5,201.48	0.23	-0.32
PRC Shanghai Comp.	3,332.48	-0.42	-0.58
Hong Kong, China HSI	21,814.37	-0.20	8.75
India BSE Sensex	76,138.97	-0.04	-3.02
Indonesia JCI	6,613.57	-0.48	-6.59
Korea, Rep. of KOSPI	2,583.17	1.36	7.65
Malaysia KLCI	1,592.28	-0.67	-3.05
Pakistan KSE 100	112,564.07	-0.32	-3.80
Philippines PSEi	6,113.19	1.14	-6.37
Singapore STI	3,882.58	0.21	2.51
Sri Lanka CSEALL	16,578.22	1.42	3.97
Taipei, China TWSE	23,399.41	0.47	1.58
Thailand SET	1,284.11	0.01	-8.29
Viet Nam VNINDEX	1,270.35	0.27	0.28



Sources: ADB calculations using data from CEIC Data Company and Haver Analytics.

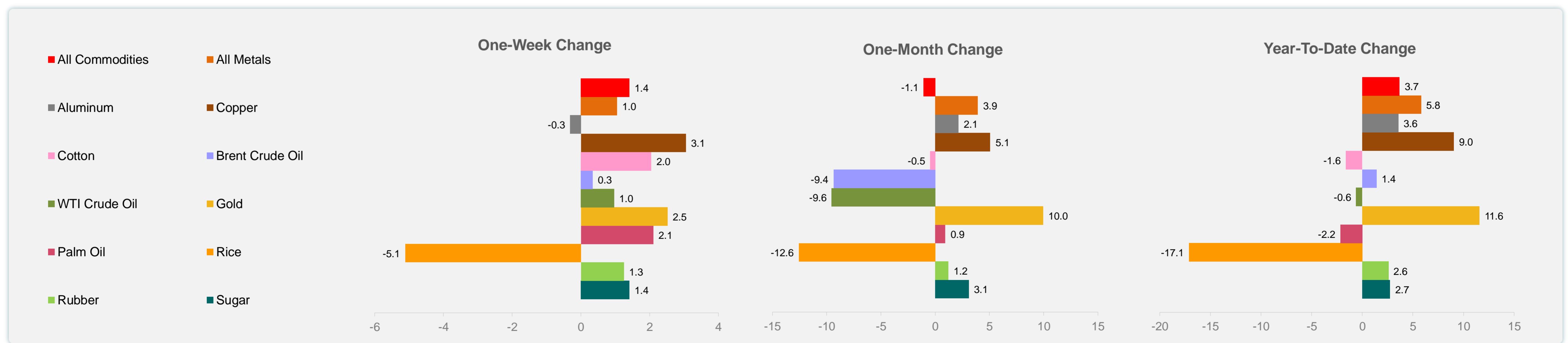
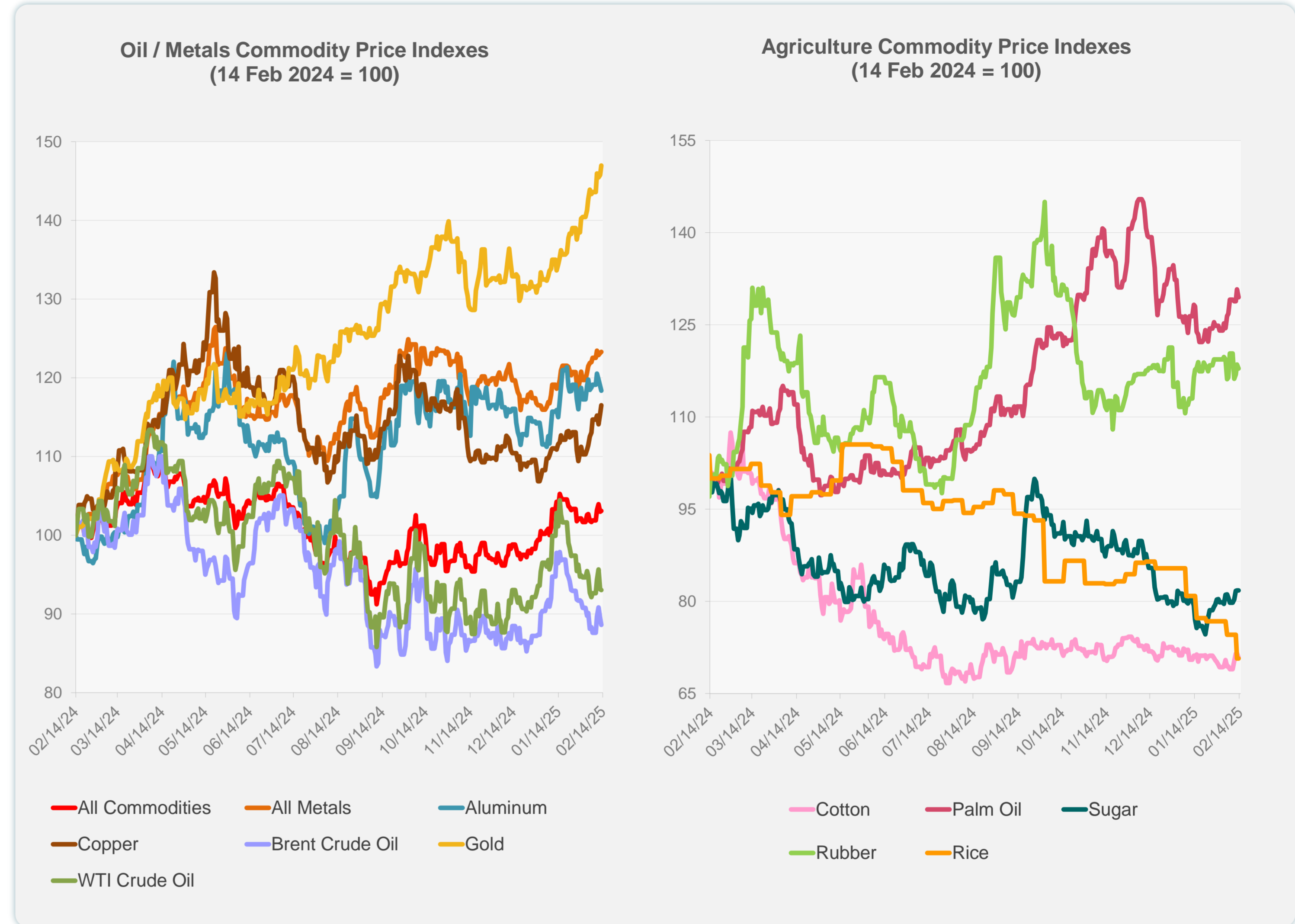


Sources: CEIC Data Company and Haver Analytics.

Daily Market Watch
COMMODITY PRICES

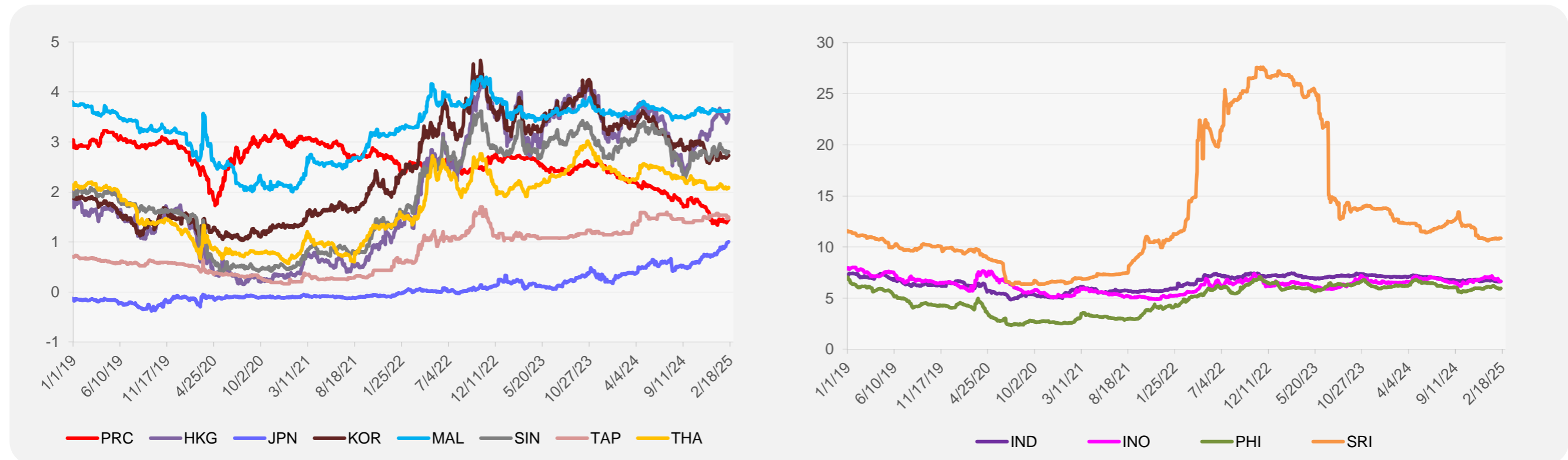
	Unit	Latest Closing	% change from Previous Day	% change from 01-Jan-25
S&P All Commodities	US\$	569.89	0.13	3.68
S&P All Metals	US\$	325.21	0.12	5.80
Aluminum	US\$/metric ton	2,616.93	-0.49	3.57
Copper	US\$/metric ton	9,434.88	0.97	9.04
Cotton	US cents/lb	64.83	-0.98	-1.62
Brent Crude Oil	US\$/barrel	75.15	-0.96	1.41
WTI Crude Oil	US\$/barrel	71.29	-0.11	-0.60
Gold	US\$/troy oz	2,928.21	0.83	11.57
Palm Oil	US\$/metric tonne	1,076.31	-1.01	-2.17
Rice ¹	US\$/metric ton	445.00	0.00	-17.13
Rubber ²	US\$/kg	242.90	-0.57	2.58
Sugar	US cents/lb	18.70	0.00	2.75

¹ Latest closing price from 22 January 2025.
² Singapore Exchange, Ribbed Smoked Sheet Rubber.

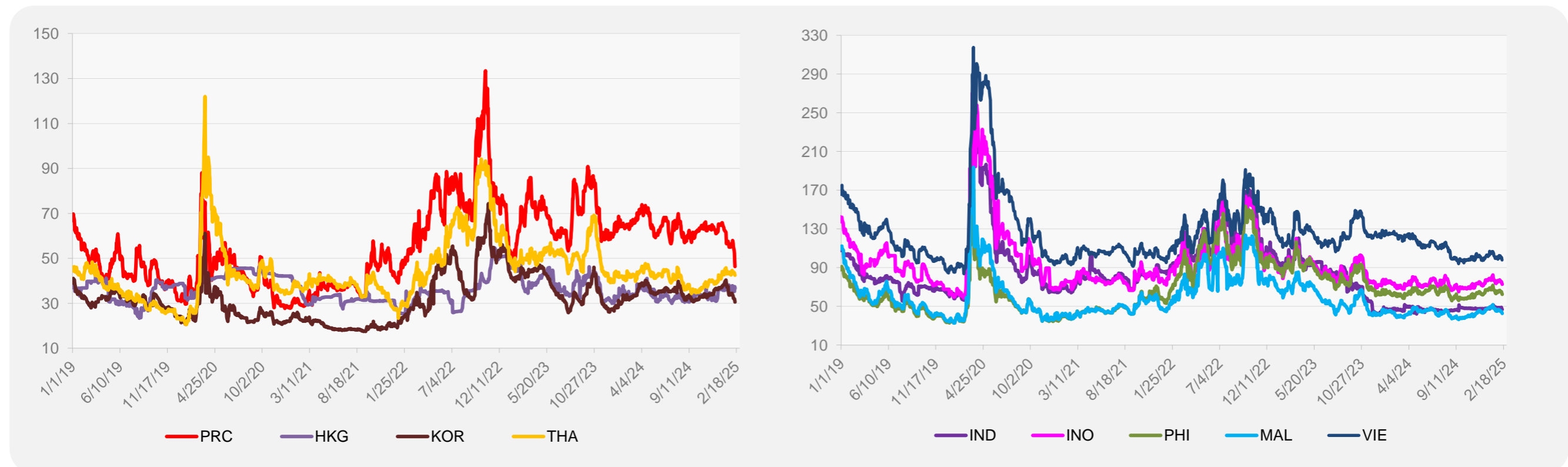


Source: ADB calculations using data from Bloomberg.

5-YEAR LOCAL CURRENCY GOVERNMENT BOND YIELDS (%)



5-YEAR CREDIT DEFAULT SWAP¹



¹ In USD and based on sovereign bonds.
Source: ADB calculations using data from Bloomberg.